

# 189<sup>95</sup>

or 6458 points

**12 Amp**

**Blower/Vacuum**

230 MPH. Converts in seconds from blower to vac. 1.5 bushel bag with adjustable shoulder strap. Includes blower, concentrator, blow tubes, vacuum tubes and bag assembly.

Was 199.95



Available NOW  
@ WEMA

# 13<sup>75</sup>

**Potgrond**  
**40L**



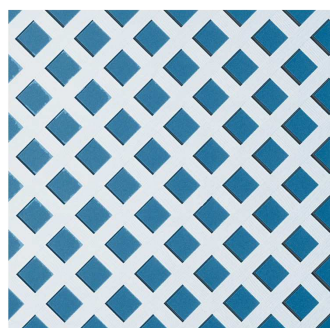
# 17<sup>95</sup>

or 610 points

**18-In. Machete and Sheath**

Heat treated high carbon steel blade. Protective heavy duty nylon sheath and belt loop.

Was 19.95



# 40<sup>95</sup>

or 1392 points

**2-Ft. x 8-Ft.**

**Classic Diamond Lattice**

Enhance home exterior decor - decks, porches, spas, gardens and more. High-impact resistant plastic.

Was 44.95



# 35<sup>95</sup>

or 1222 points

**1-Gal. Lawn**

**& Garden**

**Sprayer**

SureSpray anti-clog filter helps prevent clogging. Large opening for no mess in mixing and cleaning.

Was 39.95

# 15<sup>95</sup>

or 542 points

**6-In x 20-Ft.**

**Plastic Lawn Edging**

Flexible, corrugated with ground gripper ribs. Installs easily and will not harm feet or lawn mowers.

Was 17.95



# 31<sup>95</sup>

or 1086 points

**9-Pattern Aluminum Nozzle**

Soft insulated grip & dial turret guard. Locking clip for continuous spray. 9-Pattern for all purpose use.

Was 34.95



# 43<sup>95</sup>

or 1494 points

**Metal Swivel Sprinkler**

Solid metal construction, stable base with easy rolling wheels and brass spray caps.

Was 48.00



# 16<sup>95</sup>

or 576 points

**2-Gal.**

**Watering Can**

Durable watering can with easy access fill hole and a curved handle.

Was 19.00



# 147<sup>95</sup>

or 5030 points

**5/8-In. x 100-**

**Ft. Flexogen Garden Hose**

8-Ply construction. Maximum kink resistance.

Was 164.00



# 12<sup>95</sup>

or 440 points

**14-In. Hanging Basket Planter**

Matte black finish steel basket with natural coconut liner. Size: 21-1/2"H x 14"D.

Was 14.95

